



*November 2023: WalletHub study found that **Kaysville is the best small city in Utah** and even one of the best in the nation. According to the study, Kaysville is in the Top 1% of small cities in the United States and is ranked particularly high across the nation for safety and affordability.*

October 2024

We appreciate your patience as we have meticulously brought about a subdivision which we feel is one of the best, new, bring-your-own-builder, family-oriented, and peaceful neighborhoods (with close access to highway and retail stores) along the Wasatch Front.

Crested Peaks Development is a private subdivision consisting of 13 lots at 1387 S. Sunset Drive in West Kaysville, Utah. The subdivision consists of a west-to-east running Summit Lane, which ends in a cul-de-sac, and has a south running side street, Spur Lane, half way down Summit.

The subdivision consists of four north side lots and eight south side lots.

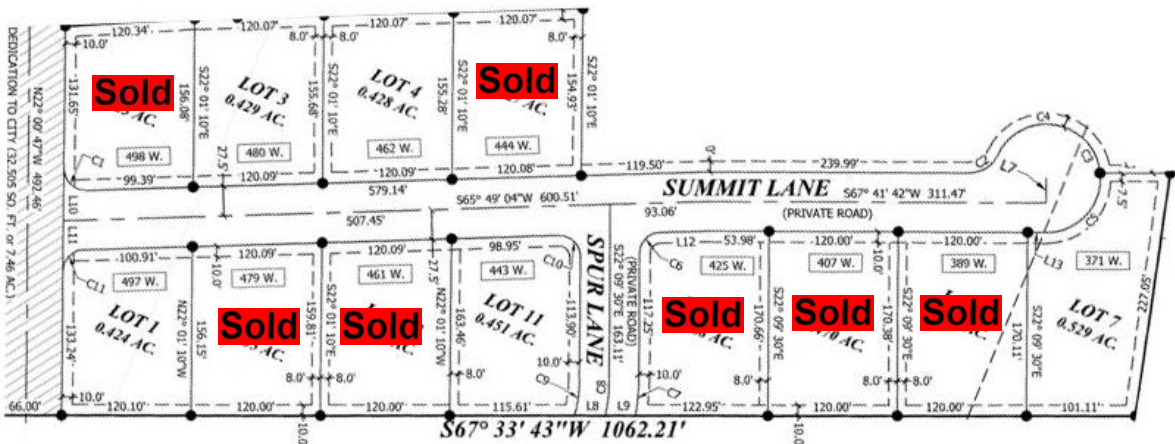
As a private subdivision, we are required to have an HOA and CC&Rs. The obligations of the HOA include, but may not be limited to, such things as the ownership and maintenance of the roads, storm water system and the secondary water system.

Yet to be added by the development company are a subdivision entrance sign as well as fencing along the two lots on Sunset. Note that there are not sidewalks in the subdivision. The lots are “Build ready”.

We are offering the building lots on a “first come, first serve” basis. We have had an overwhelming interest. Below, you will find our price list and plat.

Please let us know if we can assist you in purchasing a lot.

- Lot 1..... \$415,000.00
- Lot 2..... SOLD
- Lot 3..... \$465,000.00
- Lot 4..... \$465,000.00 (PENDING)
- Lot 5..... SOLD
- Lot 6..... SOLD
- Lot 7..... \$490,000.00
- Lot 8..... SOLD
- Lot 9..... SOLD
- Lot 10..... SOLD
- Lot 11..... \$485,000.00
- Lot 12..... SOLD
- Lot 13..... SOLD



*These lots are available directly and "for sale by owner". Any agent or broker fees are sole responsibility of buyer. *

Thanks,

Chandler
Crested Peaks